

# AutoMate 10 Installation Guide

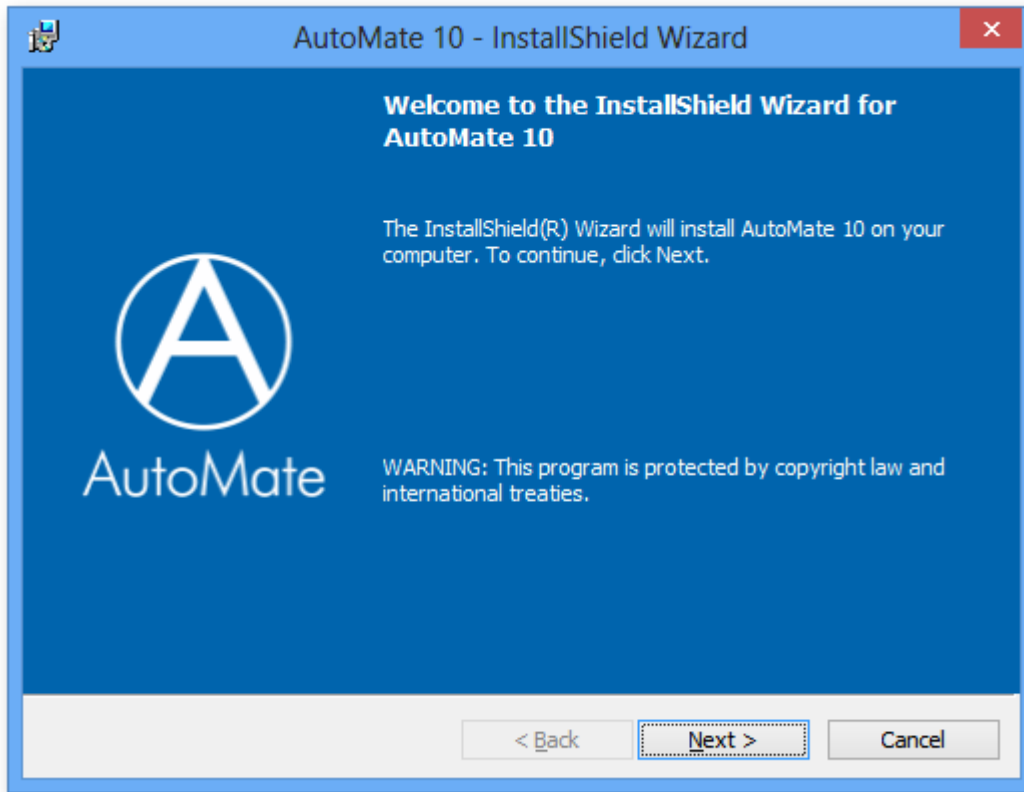
This article provides step by step instructions along with illustrations to help guide you through AutoMate's installation process. The following is a brief description of each AutoMate edition available:

- **Professional Edition** - The base version of AutoMate which includes standard features designed to perform most automated desktop processes.
- **Premium Edition** - Offers all the features found in the Professional Edition along with features designed to offer greater flexibility and implementation options to the businesses that require them, as well as the ability to connect to remote Runtime installations for remote management and task deployment.
- **Runtime Edition** - A non-GUI component used for the execution of tasks on remote machines constructed and deployed by the Premium Edition component.

**NOTE:** For convenience, default values are entered for most parameters allowing a seamless installation process by simply clicking Next on each window.

## 1. Welcome

When starting the installation of AutoMate BPA Server, the first window that appears is the Welcome window (shown below).



At this point, make sure to close all Windows programs and applications before continuing with the installation. This and all installation windows going forward will contain a **Back** button to revert back to the previous window, **Next** button to advance to the next window or **Cancel** button to cancel the installation process altogether.

Click **Next** to continue.

## 2. License Agreement

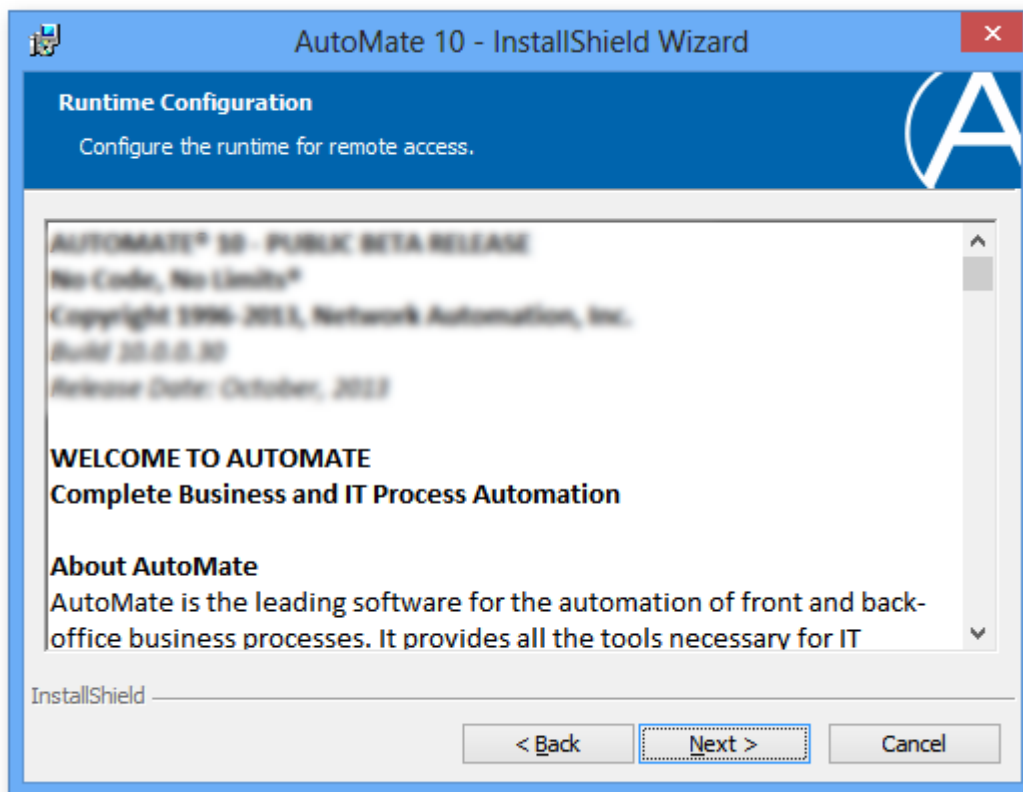
The License Agreement window (illustrated below) appears next. It is important that the End User License Agreement (EULA) is reviewed thoroughly. A hard-copy of the EULA is available by clicking on **Print**. Toggle the option that states **I accept the terms in the license agreement** to proceed. Selecting the latter option will automatically end the installation.



Click **Next** to advance.

### 3. Readme Information

The Readme Information window (shown below) contains information related to the current installation including product name, current version, release date, getting started guide, special notes and company/contact information. More importantly, it outlines new features and enhancements, important known issues (if any) and any issues addressed in this specific release. This information is updated whenever a new release is available to the public.



Click **Next** to continue.

#### 4a. Installation Details

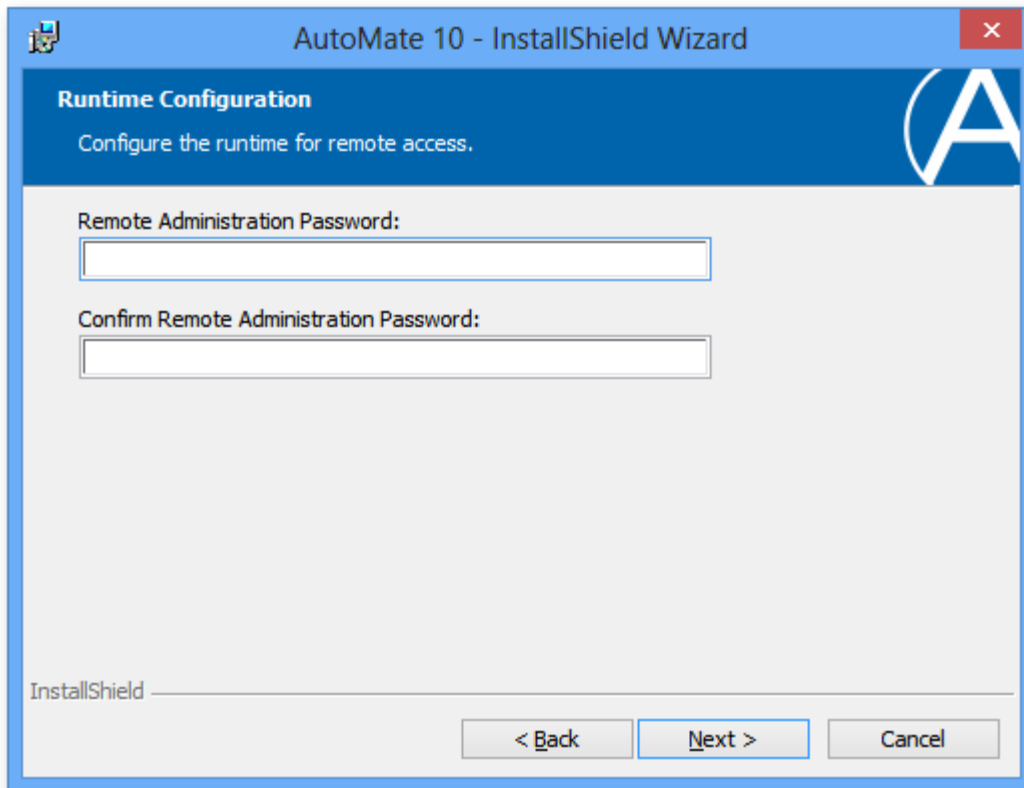
The next screen (shown below) enables selection of the type of installation to perform as well as the install location. The available types of installations are:

**Full AutoMate installation** - Installs all of the components that are included with the full version of AutoMate, including the AutoMate Task Service and all user interfaces such as the Task Administrator and Task Builder.

**AutoMate Runtime installation** - Contains only the AutoMate Task Service which performs tasks as directed by developers. It does not contain any user interfaces.

#### 4b. Runtime Configuration

If AutoMate Runtime installation was the type of installation selected, the Runtime Configuration screen (shown below) appears. Here, you can set a remote access password for the Runtime component. For more details, see Remote Administration.



Click **Next** to continue.

#### 4c. Destination Folder

The Installation details screen also shows the default folder in which AutoMate will be installed. To specify a different destination folder, click Change... and use the dialog that opens (shown below) to browse to the desired folder. You may also create a folder at a specific location if one does not exist. Upon completion, click OK. The new destination folder will be shown in the Destination Folder screen.

The default installation directories are as follows:

32bit installation on 32bit operating systems:

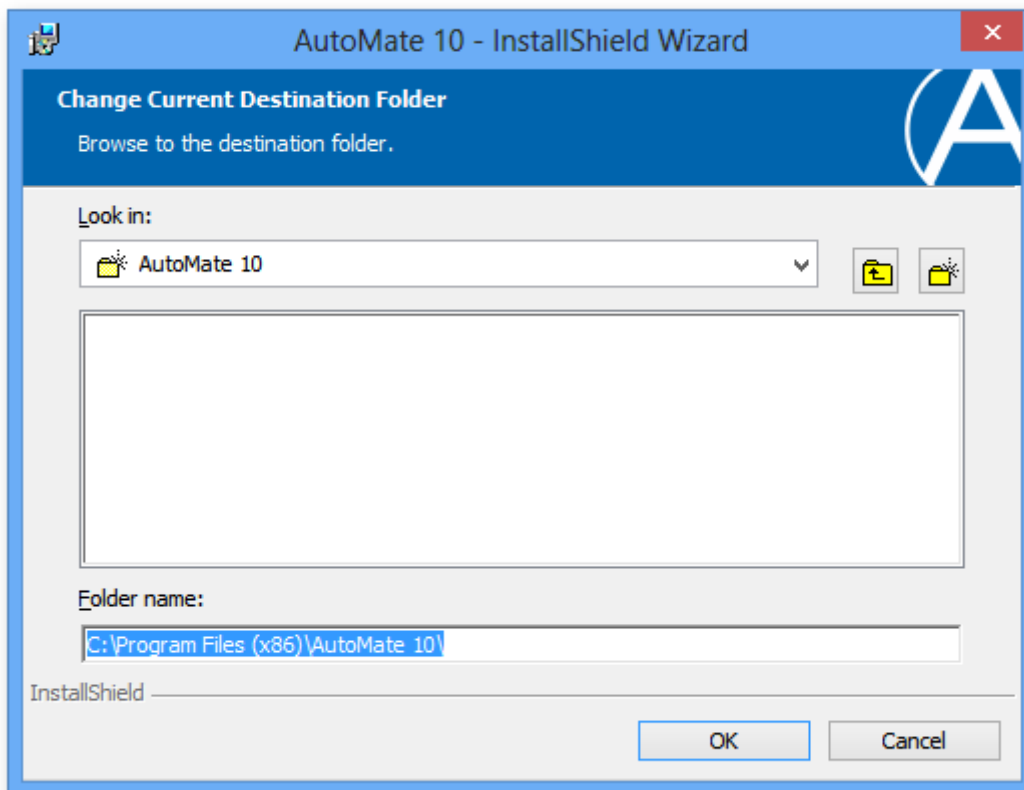
C:\Program Files\AutoMate 10

32bit installation on 64bit operating systems:

C:\Program Files (x86)\AutoMate 10

64bit installation on 64bit operating systems:

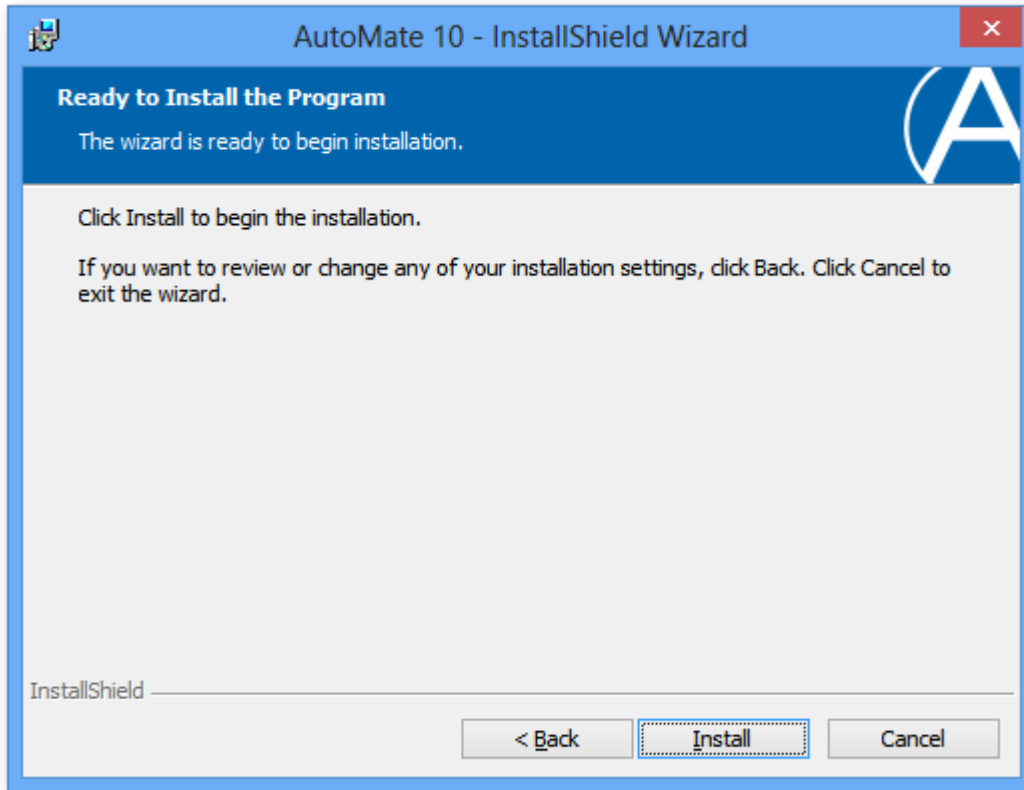
C:\Program Files\AutoMate 10



Click **OK** to save changes.

## 5. Installation

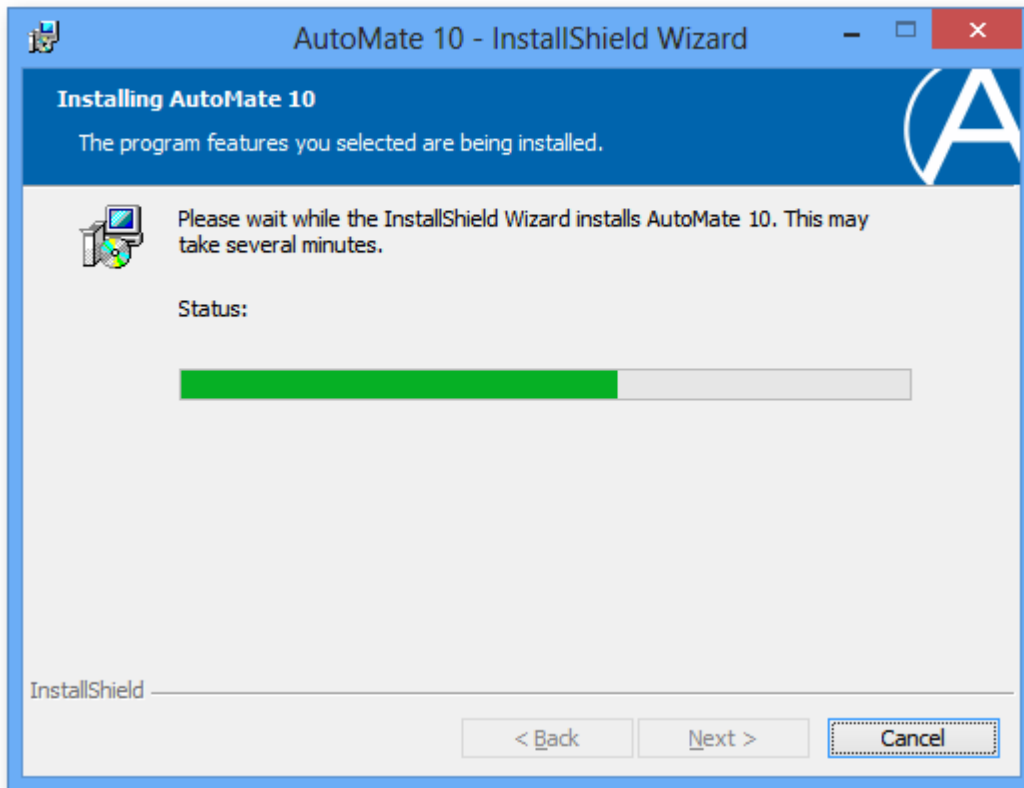
A Ready to Install the Program screen (shown below) comes next. If you need to verify or change any information previously entered, this is your last chance to click the **Back** button to revise any values. To cancel installation, click **Cancel** to exit the Wizard.



Click **Install** to install AutoMate.

## 6. Installing AutoMate

During the installation process, a windows titled Installing AutoMate (illustrated below) shows the progress of the current installation.

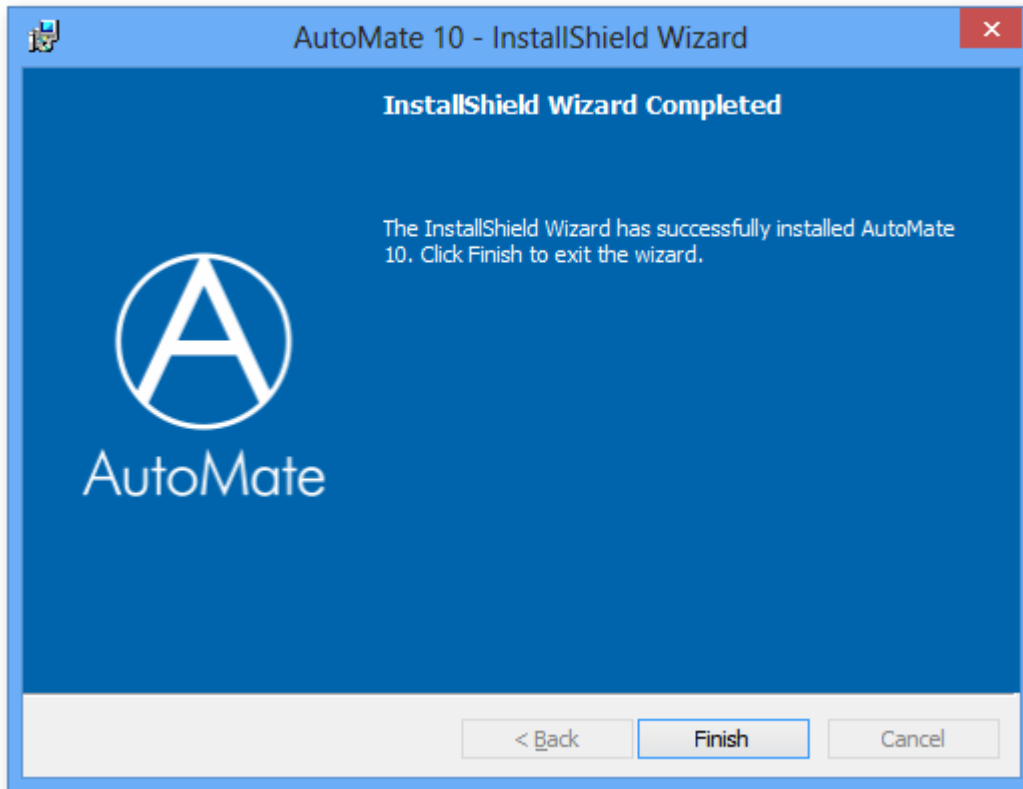


## 7. Installshield Wizard Completed

Upon completion, an **InstallShield Wizard Completed** window appears (shown below). This completes the installation process.

**NOTE:** License keys are not required during the installation process. This information can be entered in the Task Administrator (AMTA) under Options > License.





Click **Finish** to exit the Wizard.